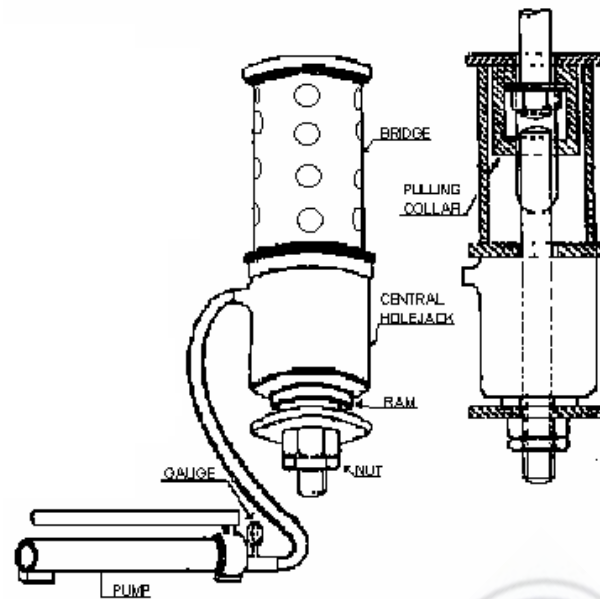




# LIGHT WEIGHT ANCHORAGE TESTING MACHINE



DGMS Circular No.19 of 1974 has advised that mines adopting roof bolting should be equipped with reliable and tested equipment for carrying out the Torque Test, Anchorage Test and Sag Test.

DGMS(Tech)(S&T)Circular No 5 of 2002.has modified bridge assembly and advised the mines to procure Anchorage testing machines of proper design. DGMS (Tech) (S&T) Circular No 11 of 2002 advises that providence of maximum load pointer in load measuring dial gauge.

Rock Bolt tester is a hydraulic device for performing bolt pull test to measure their load bearing capacity or anchor-ability.

## “MICON” Light Weight Anchorage testing equipment comprises of:-

- 1) Hydraulic Cylinder with Hollow Plunger
  - a) Cylinder Capacity: 30 Tones
  - b) Stroke 64 mm, c) Pressure rating: 700Bar
- 2) Two Speed Light Weight Hydraulic Hand Pump with glass reinforced Nylon Body
  - a) Pressure rating: 10000 Psi/700Bar
  - b) Weight : 4.1 kg. (Approx)
- 3) Modified Bridge Assembly as per DGMS (Tech) (S&T) Circular No.5 of 2002
- 4) Pulling Head for Bolt & Stud. as per DGMS (Tech) (S&T) Circular No.5 of 2002
- 5) **Glycerin filled** Hydraulic Pressure/Load Gauge with maximum pointer, Least Count 500 Kgs, outer scale calibrated directly in 0-36 Tones & inner Scale in kg/Cm<sup>2</sup> as per DGMS (Tech) (S&T) circular No11 of 2002.
- 6) DGMS approved (DGMS (Legis) Circular No 1 of 1997) 6 Meters Hydraulic Heavy Duty Hose, fire resistance & Antistatic, confirming to BC-174-1992 specification
- 7) Total Weight of the Equipment is 30 **Kgs** (approx).

Manufactured, Sold & Serviced by:



## Micon Engineers

25 NETAJI SUBHAS ROAD, KOLKATA 700001  
PHONE : 033-2230-9138/8378, FAX : 033-2230-8378  
Email : info@miconeng.com, website: www.miconeng.com